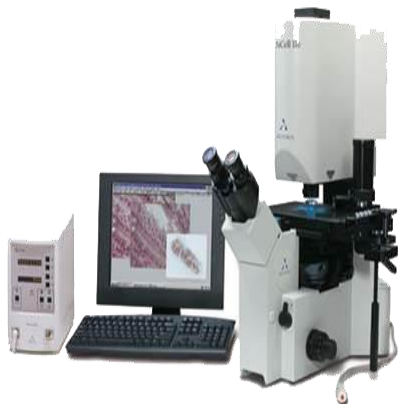


## ***Laser Capture Micro dissection system***

Micro dissection system offers a unique combination of infrared (IR) laser-enabled laser capture micro dissection (LCM) and ultraviolet (UV) laser cutting in one platform. The LCM instrument and reagents, combined with downstream Life Technologies analysis platforms like those for Sanger sequencing, next-generation sequencing, and quantitative PCR, provide a complete solution for micro genomics research.



## ***Cryostat Machine***



Cryostat are used in research to cut histological slides. They are usually used in a process called frozen section technique cutting consistent, high-quality sections. (Called Frozen section procedure).



**Clab.ksu.edu.sa**  
**clab@ksu.edu.sa**

Histology Unit  
Ground Floor  
Lab No.7  
Building 13

***Central Laboratory***

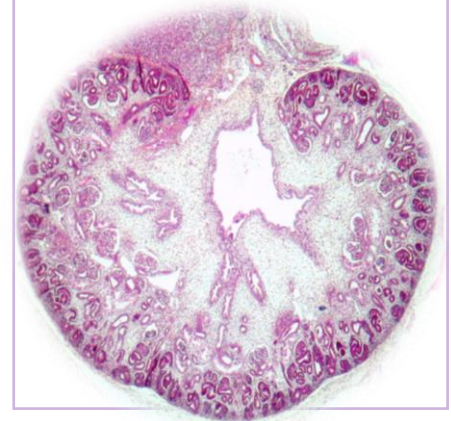
***And***

***Prince Naif Bin  
Abdul Aziz***

***Health Research  
Center***

***Medical Studies and  
Scientific Sections***

**Histology Unit**



## Histology Unit

Is the study of the microscopic anatomy of cells and tissues of plants and animals, It is commonly performed by examining cells and tissues under a light microscope or electron microscope, which have been sectioned, stained and mounted on a microscope slide.)



Automated Stainer



Automated Microtome

### The First Part of Histopathological Preparation:

- Labeling.
- Macroscopic description.
- Fixation.
- Dehydration.
- Clearing agent.
- Impregnation with paraffin wax.

